

CONICAL DEFLECTOR VGDEFLECSTD



APPLICATION

General use : Protect the body and avoid product penetration in the dead parts of the body.

GENERAL CHARACTERISTICS

Range : from DN 50 to DN 600.

Conical deflector.

Assembling without body machining.

Assembling with body machining on request.

The deflector should be mounted on the upstream side of the valve.

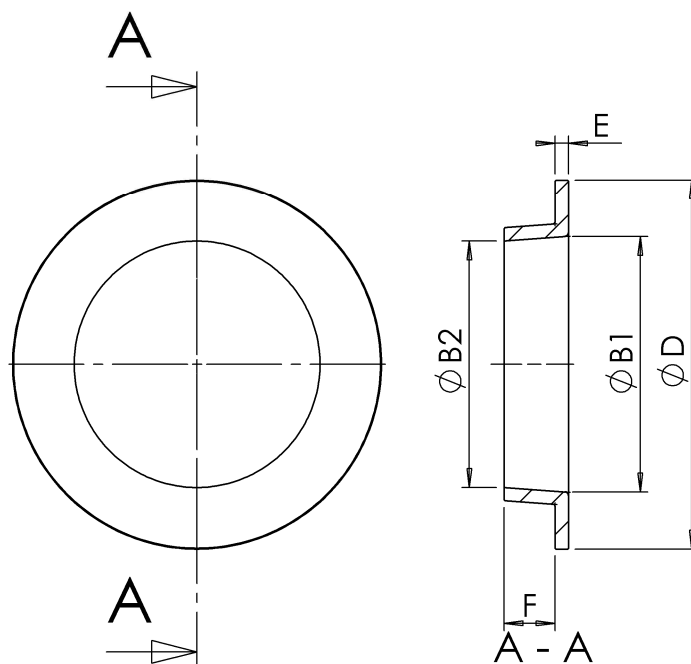


CONSTRUCTION

1		Conical deflector	Stainless steel 316	DIN: X5CrNiMo18 10 ASTM: A 182 AISI 316 BS: 970 316 S16
Pos.	Qty.	Description	Material	

DIMENSIONS

DN	ØB1	ØB2	ØD	E	F	Weight (kg)
50	36	32	90	6	18	0,35
65	52	42	105	6	18	0,45
80	64	58	120	7	23	0,70
100	86	72	145	7	23	0,95
125	109	104	170	7	22	1,2
150	135	130	195	7	27	1,5
200	184	180	250	7	26	2,1
250	231	226	310	7	31	3,1
300	285	276	365	7	30	3,8
350	335	306	420	8	43	6,1
400	385	356	472	8	44	7,1
450	435	406	527	8	47	8,5
500	485	455	582	8	49	10,0
600	585	555	683	8	47	11,8



STANDARDS

Raised face according to standard NF EN 1092-1.